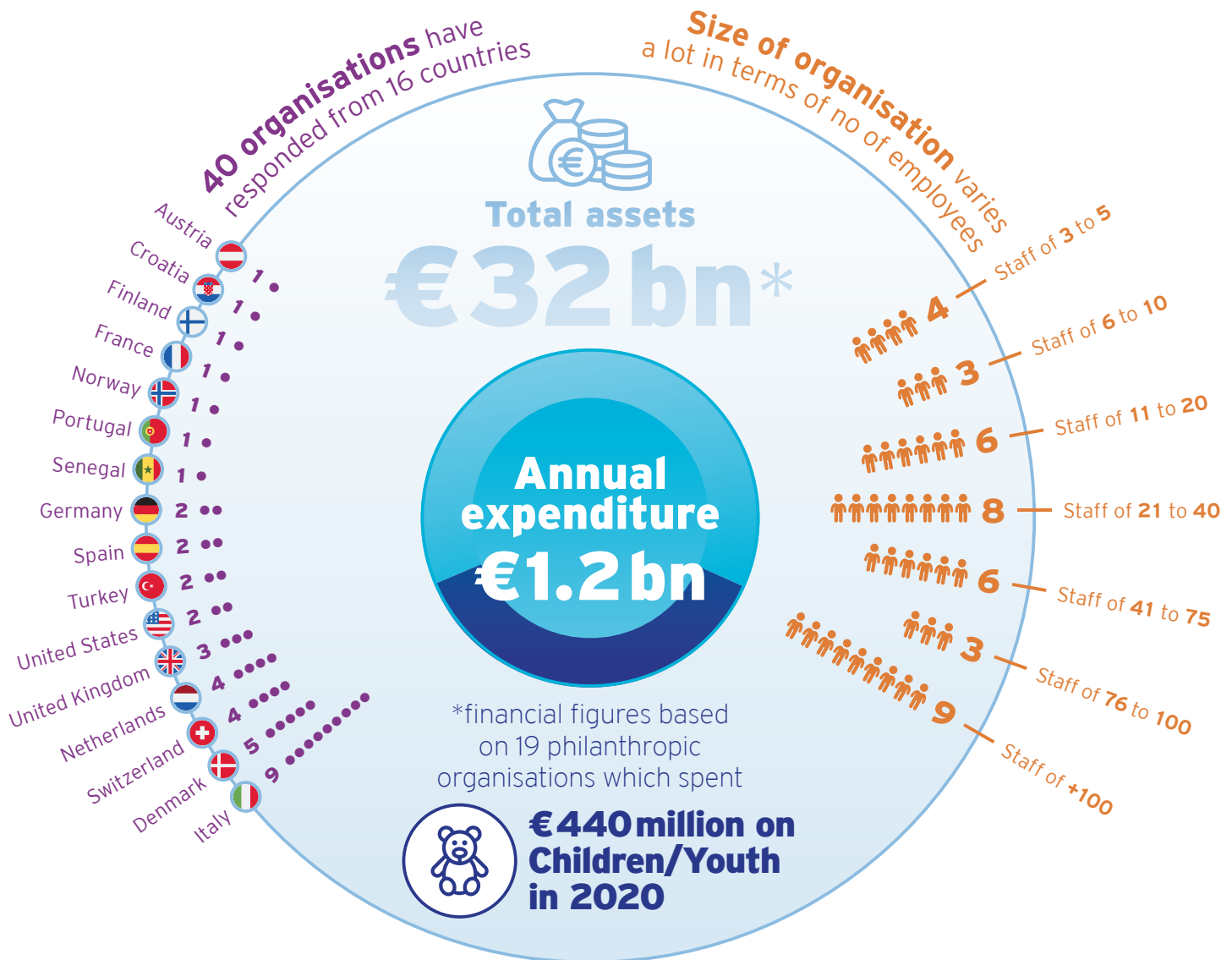


Children's Participation in Philanthropy

ACT2GET:IER

HIGHLIGHTS, CHARACTERISTICS & TRENDS



AMOUNTS	MINIMUM	MAXIMUM	MEDIAN	AVERAGE
Assets	From € 300 m	to € 6 bn	€ 1.0 bn	€ 1.7 bn
Annual expenditure	From € 300 k	to € 230 m	€ 56.7 m	€ 63.1 m

The 19 organisations that provided financial data have combined assets of at least 32 billion euros, and **1.2 billion euros of annual spending**.

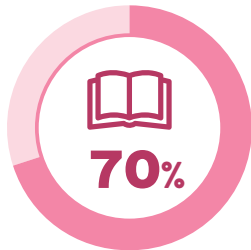
These organisations spent **over 440 million euros** in 2020 specifically for their activities dedicated to children/young people.

Children's Participation in Philanthropy

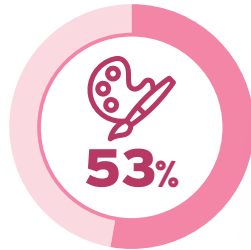
ACT2GET:IER

HIGHLIGHTS, CHARACTERISTICS & TRENDS

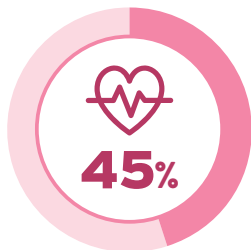
PRIMARY FOCUS AREAS



Education & Training



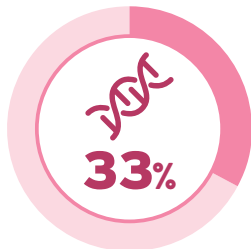
Arts & Culture



Health



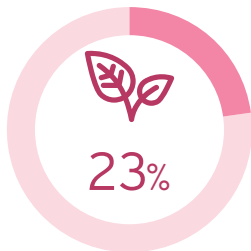
Civil Society



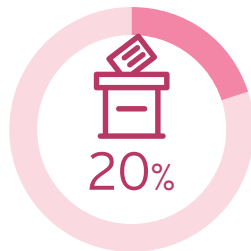
Sciences & Technology



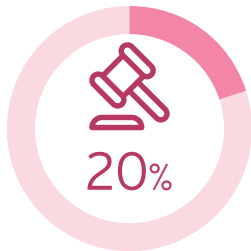
Equity / Equality



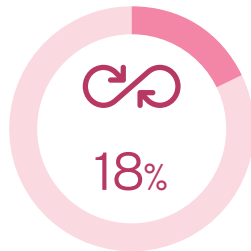
Environment



Democracy

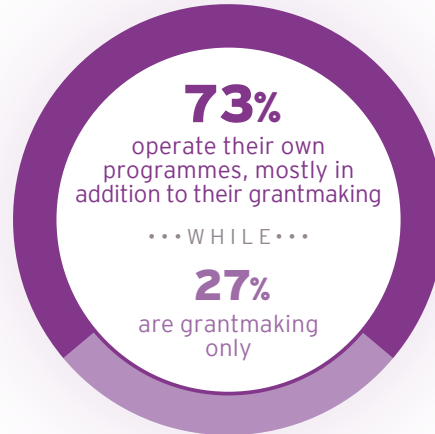


Human rights



Sustainability

OPERATIONS



MAIN TYPES OF FINANCIAL SUPPORT

83% short-term support / grants

68% Earmarked core support / grants

63% Long-term support / grants

43% Prizes and awards

33% Fellowships

25% Unearmarked core support / grants

10% Loans

8% Guarantees

OTHER TYPES OF SUPPORT

73% Organisation development / Capacity building

70% Networking

55% Expertise (e.g. thought leadership, research)

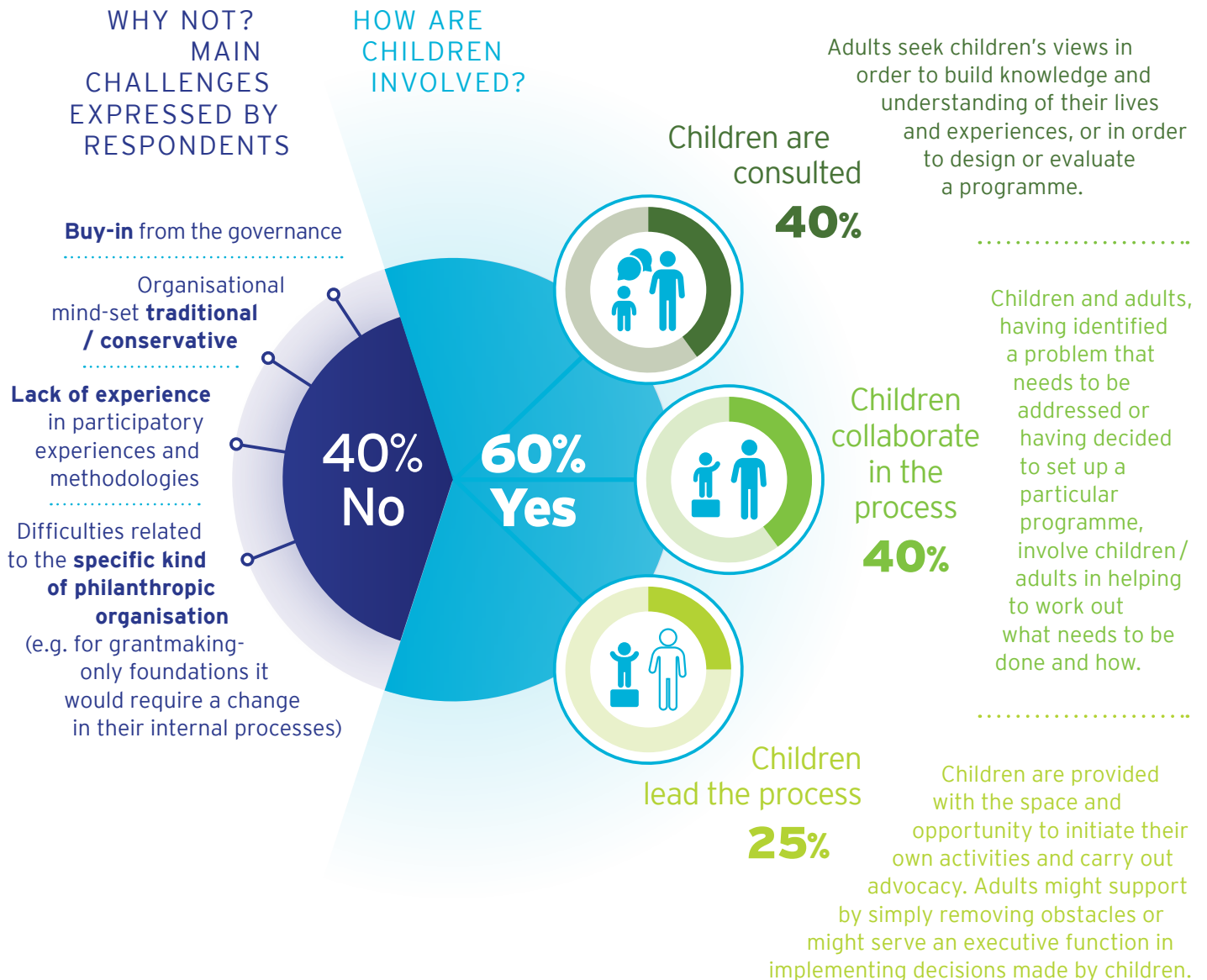
43% Strategic

40% Communications and Advocacy

Involving children / young people in philanthropy

60% of respondents indicated that they do involve children and young people in their work, 40% do not.

By "child participation" in this survey we mean that children and young people (0-21 years old) have the conditions and opportunities to express their views and influence decision-making around planning, implementing and/or evaluating the organisation's activities. We do not mean attending or accessing services and products, but rather impacting how such services are developed and implemented.

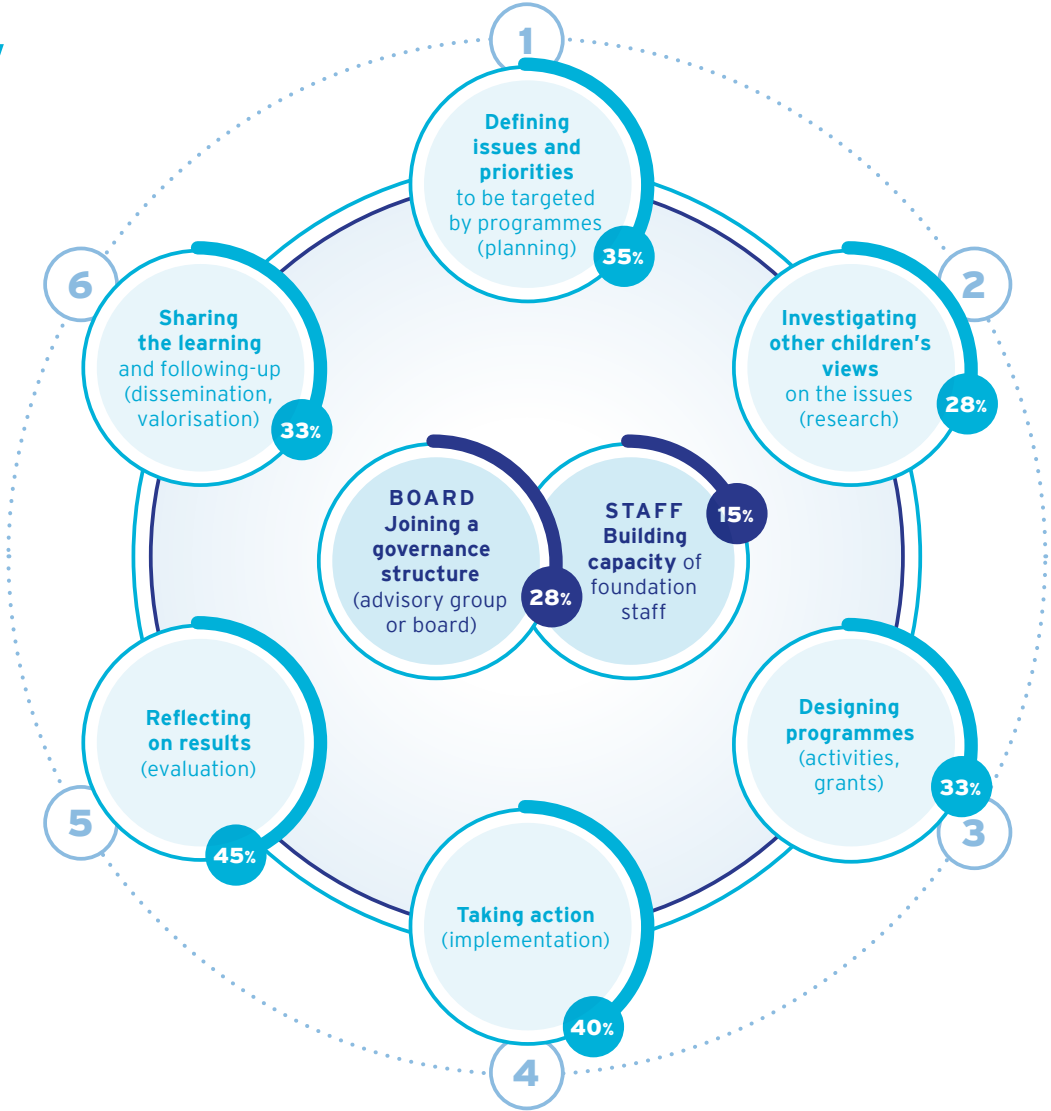


Children's Participation in Philanthropy

ACT2GETHER

HIGHLIGHTS, CHARACTERISTICS & TRENDS

How children / youth are involved



Where are respondents in this journey?

Some of the organisations are only at the initial stages, while others have gone through full grantmaking cycles involving children and youth. Often respondents said they are at different stages for different aspects: they might be at initial stages of involving children / young people at an organisational level, while being already advanced in involving them at a project level.

Respondents who are already involving children / young people and would recommend it to other foundations: **100%**